

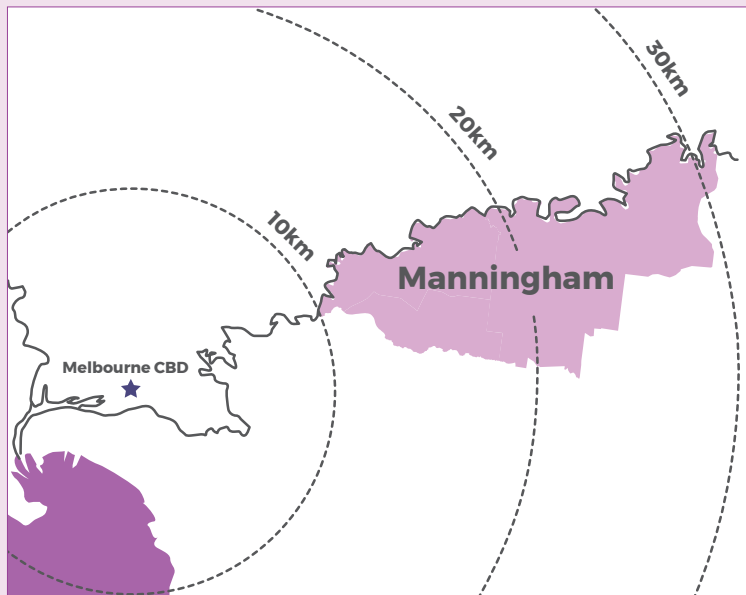
Manningham Council

Where we are

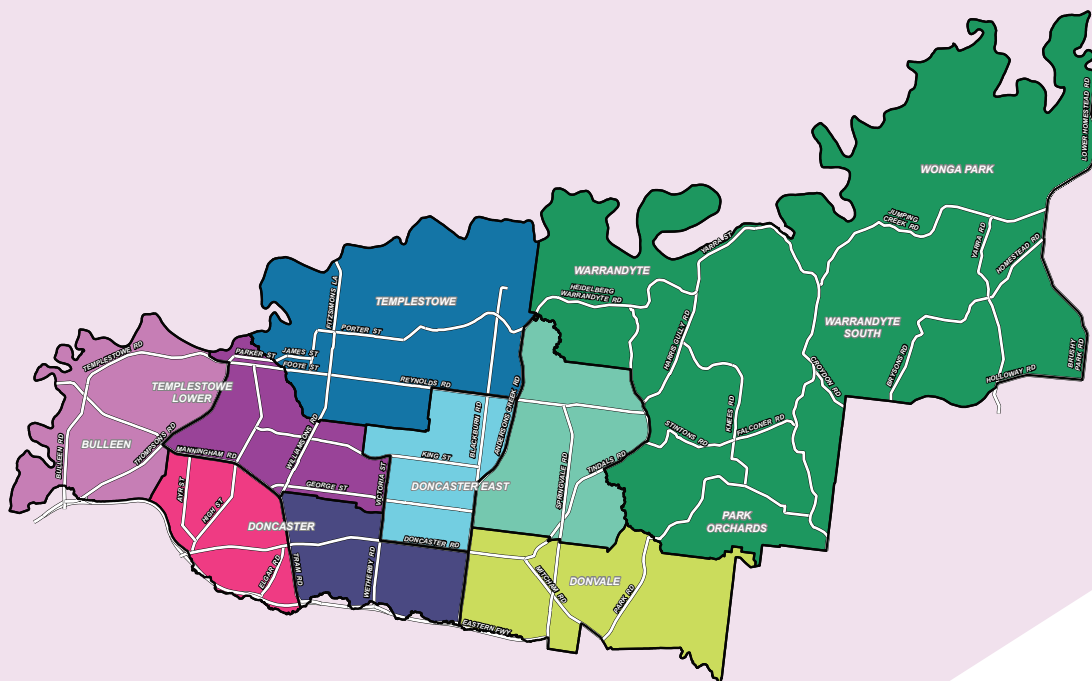
Manningham is in Melbourne's eastern suburbs.

It stretches from Bulleen, about 12km from Melbourne's Central Business District (CBD), to Wonga Park, about 32km from the CBD.

Manningham is divided into nine wards, with one councillor representing each ward.



Bolin Ward Cr Geoff Gough	Ruffey Ward Cr Stephen Mayne	Waldau Ward Cr Anna Chen
Currawong Ward Cr Andrew Conlon	Schramm Ward Cr Laura Mayne	Westerfolds Ward Cr Michelle Kleinert (Mayor)
Manna Ward Cr Tomas Lightbody	Tullamore Ward Cr Deirdre Diamante (Deputy Mayor)	Yarra Ward Cr Carli Lange



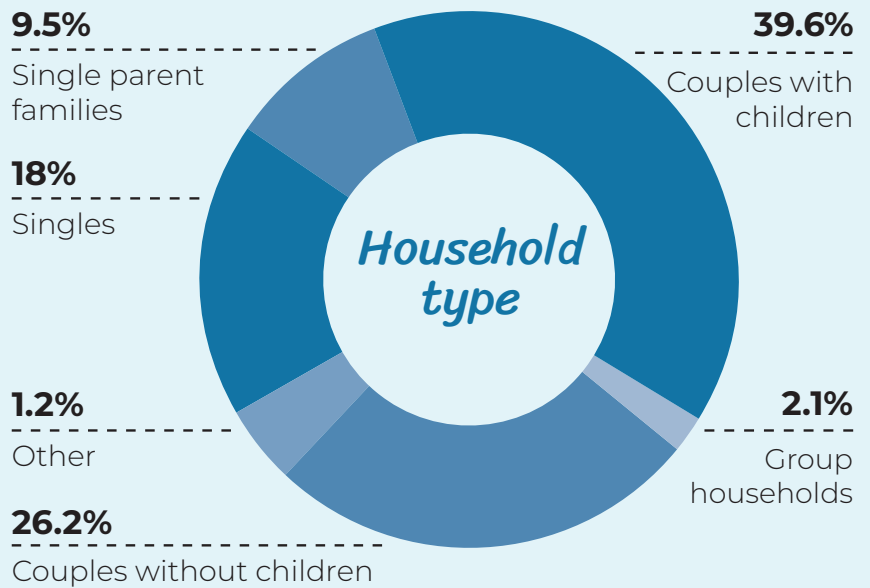
Who we are in Manningham

We are a vibrant, active and diverse multicultural community with a growing population in Melbourne's eastern suburbs.

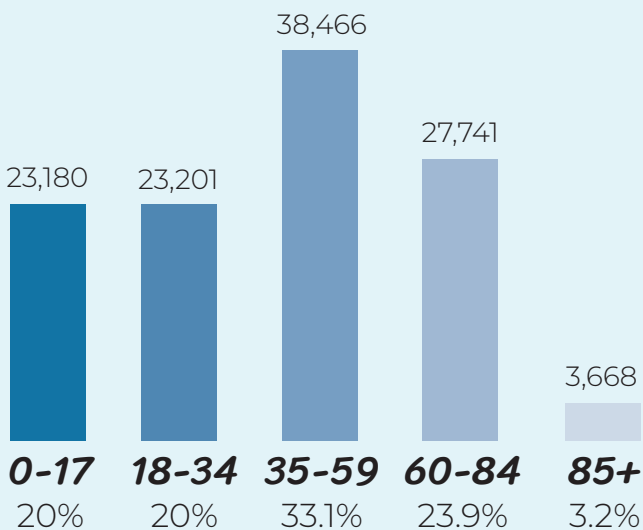
In Manningham we have a wide mix of housing options and an active regional economy. We are the only municipality in metropolitan Melbourne without a train line.

More than 17% of Manningham is classified as open space. We need more soccer grounds and upgraded sports fields to support our active local community.

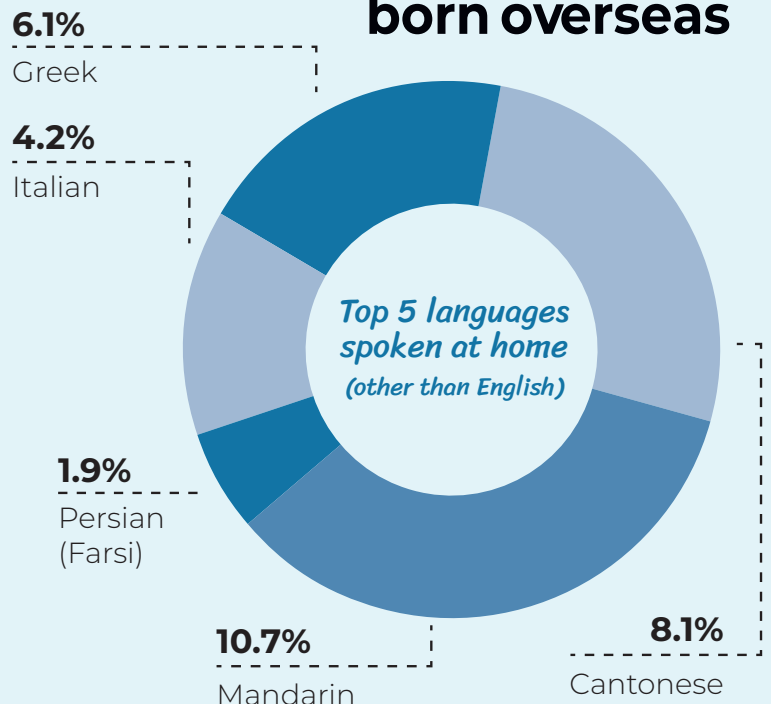
Population forecast



Age structure



39.8% born overseas



In 2016, 42% of people spoke a language other than English at home

69%

Car

1.3%

Walk/cycle

8.9%

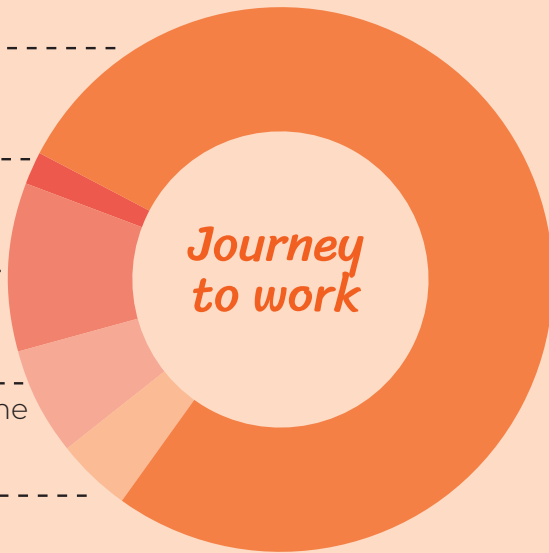
Bus

5.8%

Works at home

3.9%

Train



63%
live further than
400m
from a bus stop

41.9%
of people who work in
Manningham also live
in the area



13,000

**local businesses
are registered**



69%
travel by car to work

330

parks and reserves



4,322ha

**green
wedge**



158
playspaces

including destination parks
and playgrounds

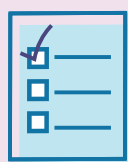


53km
**off-road
paths**

17% (20km²)
of Manningham
classified as open space

Our services

We provide more than 100 services to our local community in Manningham. Here's a snapshot of our services from the 2019/20 Annual Report.



13,067

immunisations provided



85,364

hours of care including domestic, personal and respite care support services

17.25km

of new and renewed footpaths



93%

of planning applications decided within statutory time frames

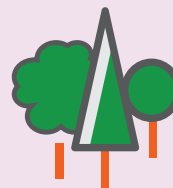
1,098

births supported by Maternal and Child Health centres



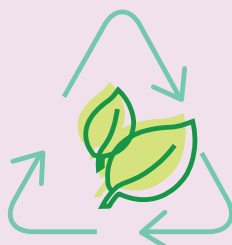
\$3.5 million

to improve parks and open spaces



579,823

library loans



56%

of waste diverted from landfill

Manningham Council

☎ 9840 9333

✉ manningham@manningham.vic.gov.au

🌐 manningham.vic.gov.au



Interpreter service **9840 9355**

普通话 廣東話 Ελληνικά Italiano العربية الفارسية